



22MM PANEL-MOUNT STROBE



XP

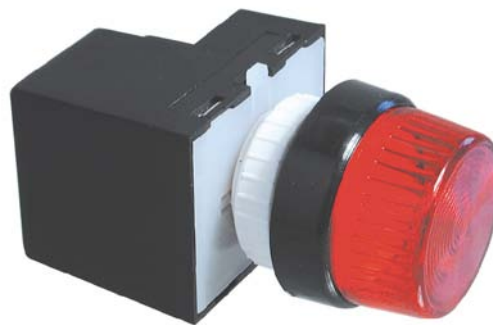


MODEL TYPES ::

XP > 22mm Panel Mount Strobe

FEATURES ::

- ▶ Small, compact design for 22mm panel cut-out hole
- ▶ 300 mm (12 inch) leads
- ▶ Multi-voltage (10-100 VDC, 20-72 VAC), 110 and 220 AC models
- ▶ NEMA1, 3R, 12, 13, 4X, IP67 rated
- ▶ All models are CE compliant, UL recognized
- ▶ 12 month guarantee



ACCESSORIES + OPTIONS ::

- ▶ 22mm enclosure with knock-out (PBB22-1)
- ▶ Replaceable bulb and lens sections
- ▶ Up to 5 lights mounted in sealed enclosure



PBB22-1

ORDERING INFORMATION :: COMPLETE ASSEMBLY

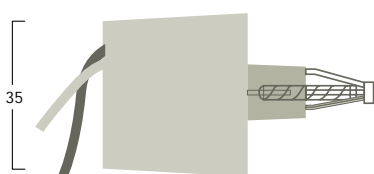
MODEL TYPE:: XPN
 VOLTAGE:: MV, 110, 230
 COLOR:: red, amber, green, blue, clear
 EXAMPLE:: XPN-MV-1R [panel strobe, multi-voltage, red]

ORDERING INFORMATION :: COMPONENTS

MV DRIVE UNIT:: XPN4XMV/1L
 110VAC DRIVE UNIT:: XPN4X110/1L
 230VAC DRIVE UNIT:: XPN4X230/1L
 LENS ASSEMBLY:: NL (color) [example: NLR]
 COLOR:: red, amber, green, blue, clear

PBB22-1	CURRENT XP
12V DC	160 ma
24V DC	80 ma
110V AC	18 ma
220V AC	12 ma

DIMENSIONS



lead length - 12" (300mm)

